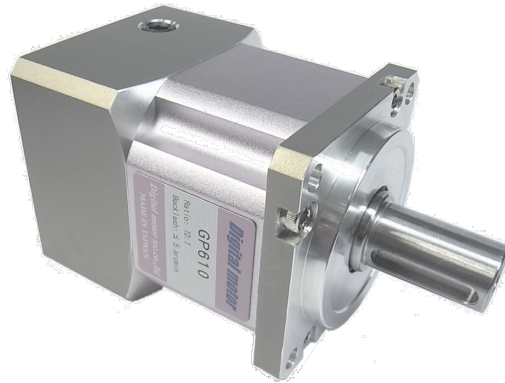


Planetary Reducer for Servo Motors/Stepping Motors

GP6□ Series

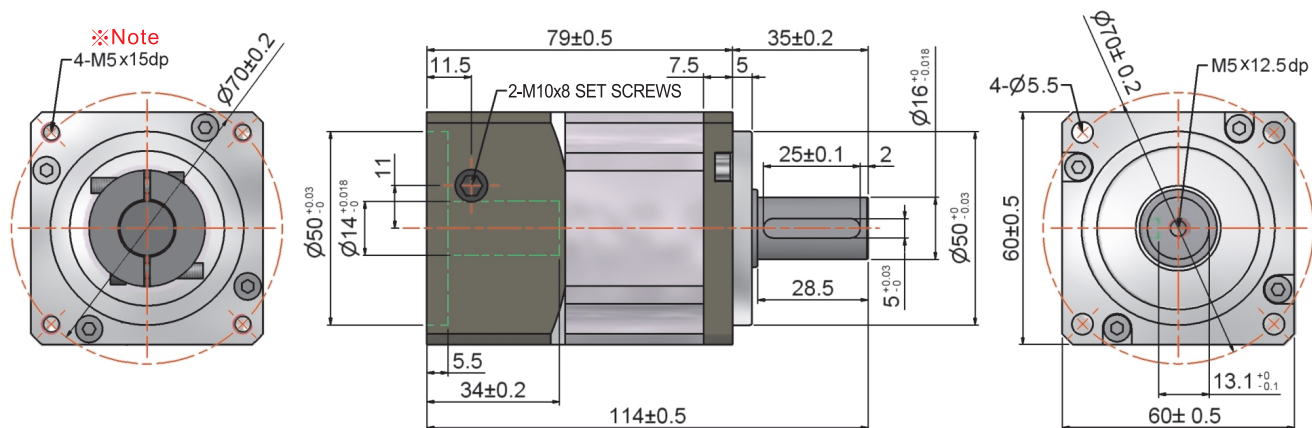


Features :

- Patented design, **Patent No. M 383659**
- Light weight, high stiffness and high environmental endurance with anodized aluminum alloy outer shell.
- High impact resistance and high wear resistance with nitriding steel alloy gears.
- Compatible with servo motors and stepping motors of any brands.
- High efficiency >95%
- Low backlash < 3 arcmin
- Low noise < 60db
- Easy to mount on motors.

Specifications		Unit	Gp605	GP605P	GP610	GP610P
Stages			Single stage			
Ratios			5		10	
Nominal output torque	Tn	Nm	60		40	
Max. output torque	Tp	Nm	3x Tn			
Nominal input speed	Nn	rpm	5000			
Max. input speed	Np	rpm	10000			
Backlash		arcmin	≤ 3			
Torsional stiffness		Nm/arcmin	7			
Radial load at the output shaft	Fr	N	1530			
Axial load at the output shaft	Fa	N	765			
Efficiency	η	%	97			
Running noise (n=3000rpm)		db	< 60			
Operating temperature		°C	-10~+90			
Weight		Kg	0.99±0.05			
Mounting screw			M5	M4	M5	M4

□ Dimensions (Unit : mm)



※ **Note:** M5 for Mitsubishi servo motors
M4 for Panasonic servo motors