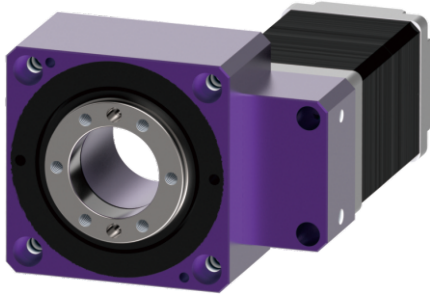


Hollow rotating platform

GT45 series



Features :

- Super large diameter hollow structure, convenient for piping and wiring.
- The surface of the rotating disk is the same as that of the DD motor, which can be directly connected to the work object, and the working accuracy can be improved.
- Reach the design goal of lightweight and space-saving

■ Product name view: GT 45 - HB O6L

1. Hollow rotating platform GT : GT series
2. Model 45 : Type 45
3. Stepper motor HB : MS225-09A
4. With encoder None: No matching encoder
O6 : 800 P/R Open collector output
O6L : 800 P/R Line Driver output

Specification		Unit	GT45-HB	GT45-HB06L	GT45-HB06
Encoder signal output type			Non	Line Driver output	Open Collector output
Encoder resolution / Voltage				800 P/R DC5V	800 P/R DC5V
Input side two-phase stepping motor	Step angle		1.8 deg		
	Rated store flow		0.95A / Phase		
	Holding torque		0.9kg-cm		
	Resolution		800、1600、3200 P / R		
	Applicable driver		DS22DD		
Bearings for supporting rotating platforms			Deep Groove Ball Bearings		
Allowable torque	kg.cm		2.6		
Allowable moment of inertia	kg.m ²		2400 x 10 ⁻⁷		
Allowable disk speed	r / min		140		
Reduction ratio			3.6		
Repeated positioning accuracy	Sec		±15		
Allowable surface load	kgf		1		
Allowable surface torque	kgf.cm		5		
Parallelism of rotating platform	mm		0.05		
Rotating Platform Deviation	mm		0.03		
Concentricity of rotating platform	mm		0.03		
protection level	IP		40	20	
Rotating platform weight	kg		0.4		

※ Allowable surface torque: Loaded at the eccentric position of the center of the rotating platform, the allowable value of the force that causes the disk surface to tilt

■ Dimensions (unit: mm)

