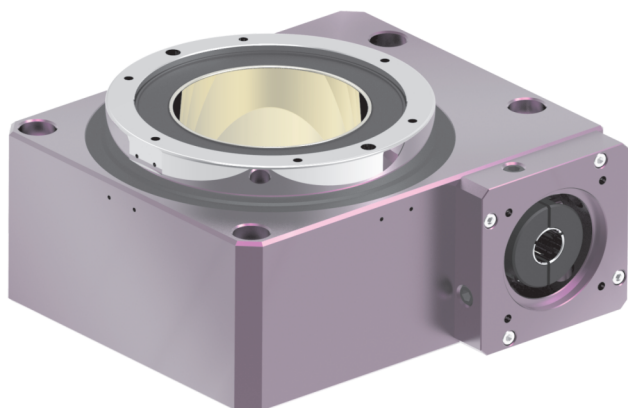


## Hollow rotating platform

### GT 200 series



### ■ Features:

- Super large diameter hollow structure, convenient for piping and wiring.
- Use high-rigidity Cross Roller bearings to strengthen the allowable load of the disk surface.
- The input motor is installed horizontally, reducing the occupation rate and reducing the complexity of mechanism installation.
- The surface of the rotating disk is the same as that of the DD motor, which can be directly connected to the work object, and the working accuracy can be improved.
- It can be freely matched with various brands of servo motors or our stepping motors, and the selection is highly flexible.

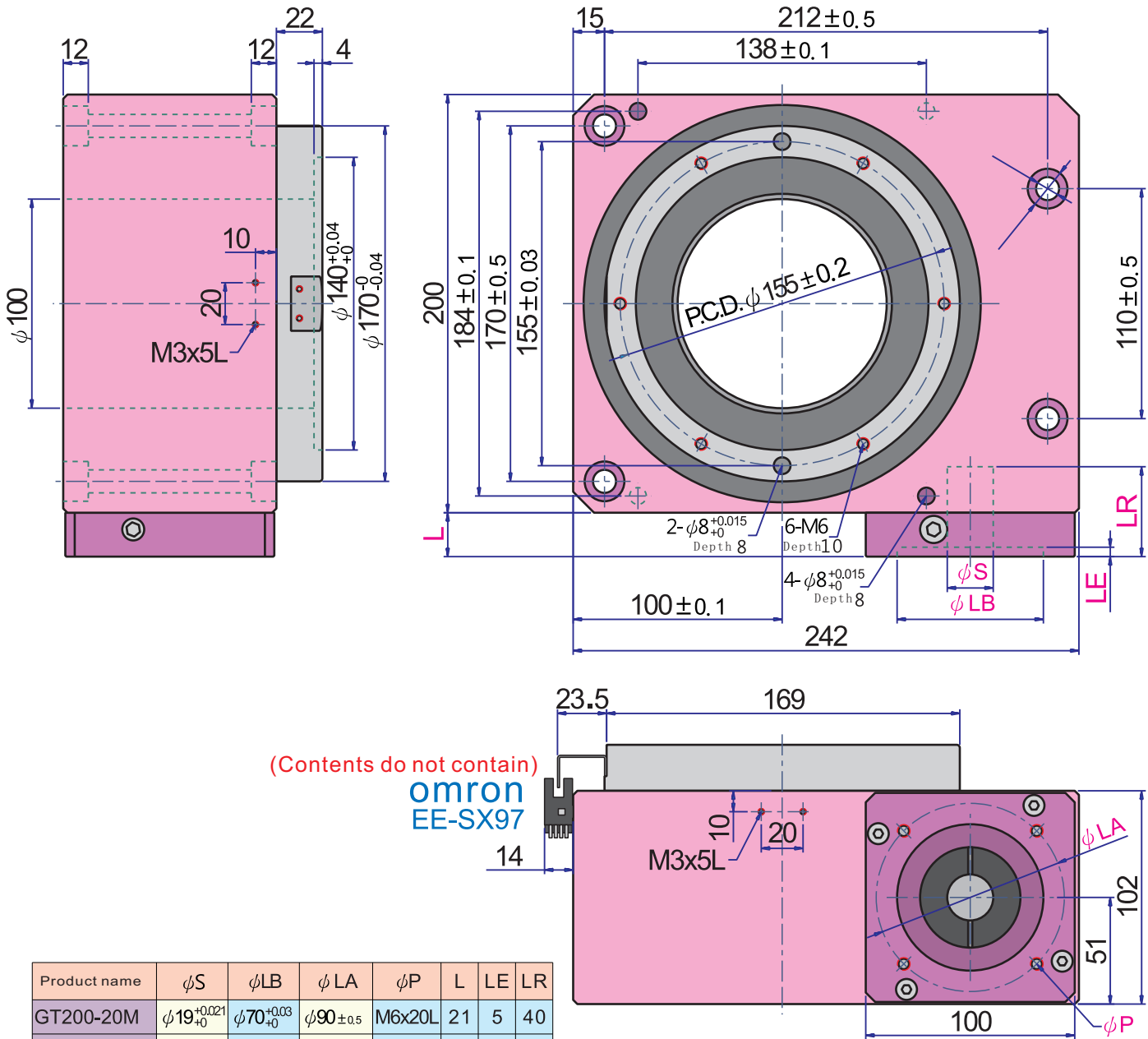
### ■ Product name view : GT 200 - 20 M

1. Hollow rotating platform GT : GT series
2. Model 200 : Type 200 , Can be used with 80 、 90 、 100 frame motor
3. Disk reduction ratio 20 : 20 to 1
4. Input motor type M : Delta / Mitsubishi servo motor(80 frame)  
M1 : Delta / Mitsubishi servo motor(100 frame)  
G : For use with GPN9 reducer

Specification	Unit	GT200-20M	GT200-20M1	GT200-20G
Type of input motor		Delta / Mitsubishi servo motor (750W)	Delta / Mitsubishi (1000~2000W)	<b>Dimamotor</b> GPN9 reducer
Bearings for supporting rotating platforms		High rigidity, high load Cross Rollerbearing		
Allowable torque	N.m	135		
Allowable disk speed	r/min	100		
Resolution	P/R	According to motor		
Reduction ratio		Direct connection 1:20		
Repeated positioning accuracy	Sec	±15		
Allowable surface load	KN	15		
Allowable surface torque	N.m	300		
Parallelism of rotating platform	mm	0.05		
Rotating Platform Deviation	mm	0.035		
Concentricity of rotating platform	mm	0.03		
Protection level	IP	40		
Rotating platform weight	kg	19.1		

※ Allowable surface torque: Loaded at the eccentric position of the center of the rotating platform, the allowable value of the force that causes the disk surface to tilt

## Dimensions (unit: mm)



Product name	φS	φLB	φLA	φP	L	LE	LR
GT200-20M	φ19 <sup>+0.021</sup> <sub>+0</sub>	φ70 <sup>+0.03</sup> <sub>+0</sub>	φ90±0.5	M6x20L	21	5	40
GT200-20M1	φ22 <sup>+0.021</sup> <sub>+0</sub>	φ95 <sup>+0.035</sup> <sub>+0</sub>	φ115±0.5	M8x20L	25	9	46
GT200-20G	φ22 <sup>+0.021</sup> <sub>+0</sub>	φ80 <sup>+0.035</sup> <sub>+0</sub>	φ100±0.5	M6x20L	25	9	46