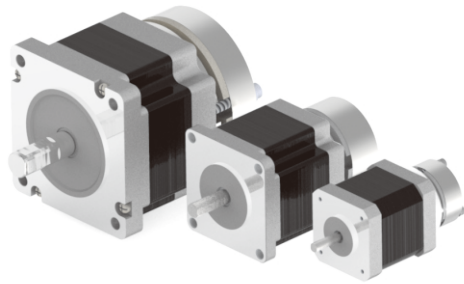


## 5-phase □42/60/86 0.72 degrees Stepping motor with brake model



### Features :

- Integrated design of motor and non-excitation actuating brake.
- Possess a power-off hold function to prevent the risk of the mechanism falling.
- When the motor stops, the brake function is activated, and the motor current is turned off to prevent the motor from heating.

### Motor name view: MS5 4 5 H - AM

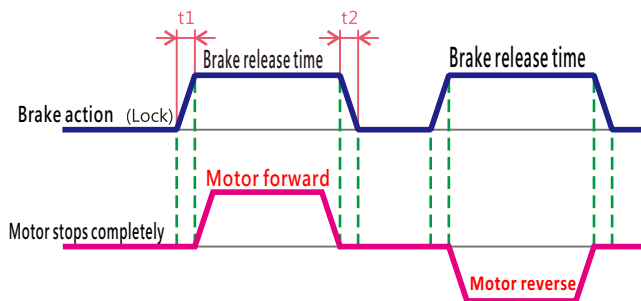
1 2 3 4 5

- 1: MS5: 5-phase stepping motor
- 2: 4 : 42\*42 Mounting surface 6: 60\*60 Mounting surface  
9 : 86\*86 Mounting surface
- 3: 5 : motor length 48mm
- 4: H: rated current 1.4A / Phase
- 5: AM: Single shaft with brake model

### Motor Electrical Characteristics :

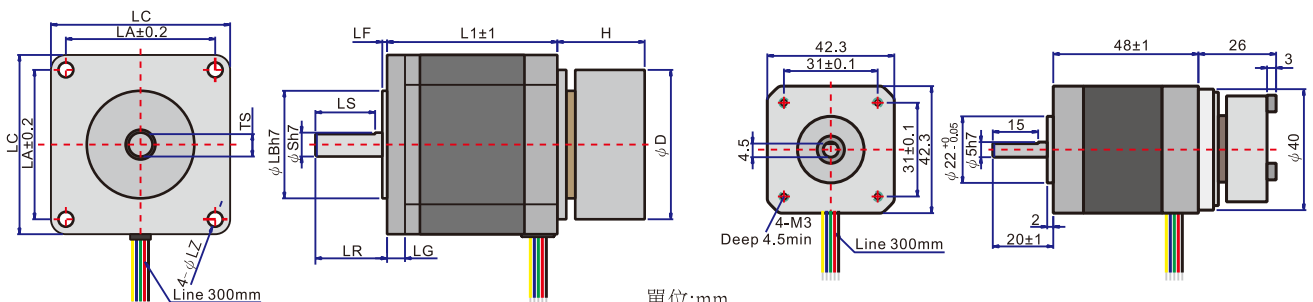
Motor model	Step angle	Rated voltage	Rated current	Coil impedance	Holding torque	Motor length	Rotor inertia	Weight	Electromagnetic brake static friction torque	With drive
	Deg	V/Phase	A/Phase	Ω/Phase	Kg-cm	mm	g-cm <sup>2</sup>	kg		
MS545H-AM	0.72	1.05	1.4	0.75	2.4	48	68	0.43	5kg-cm	DS514MD
MS566D-AM	0.72	1.01	2.0	0.57	8.3	54	450	1.25		DS514MD
MS569D-AM	0.72	1.6	2.0	0.8	16.6	84	840	1.75		DS514F
MS596-AM	0.72	2.1	1.4	1.5	21	66	1400	3.1	20kg-cm	DS514F
MS599-AM	0.72	3.2	1.4	2.3	41	98	2700	4.1		DS514F

### Sequence Diagram of Brake Motor Actuation



Motor name	Brake	
	Release time t1	Action time t2
MS545H-AM	25ms	20ms
MS566D-AM	30ms	50ms
MS569D-AM		
MS596-AM		
MS599-AM		

### Motor Dimensions :

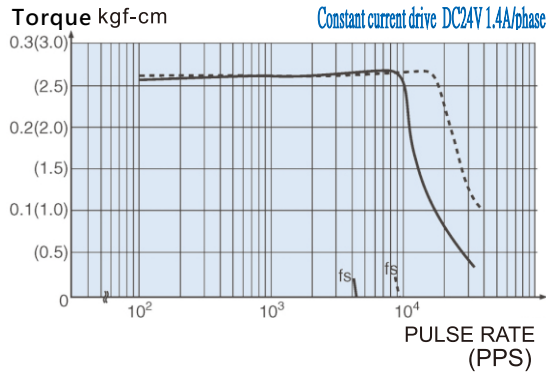


Motor Specifications	□LC	L1	φS	LR	TS	LS	φLB	LF	LZ	LA	LG	H	φD
MS566D-AM	60	54	8	24	7.5	20	36	1.6	4.5	50	6	29.5	50
MS569D-AM		84											
MS596-AM	86	66	14	37	13	25	60	1.6	6.5	70	10	30	85
MS599-AM		98											

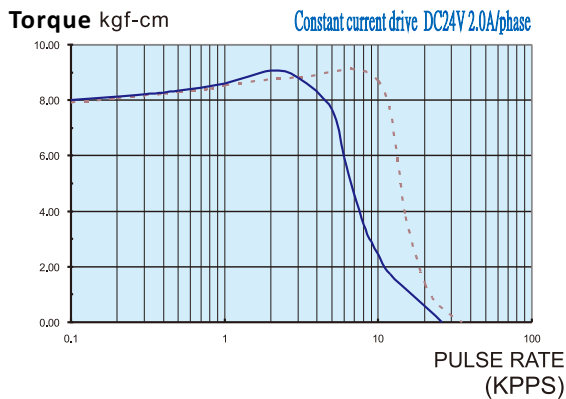
MS545H-AM

## Speed-torque characteristic curve :

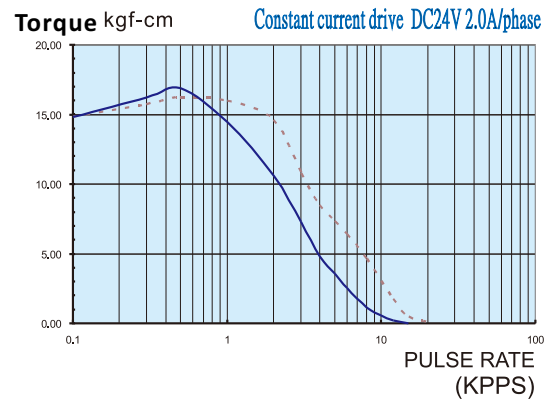
### MS545H-AM



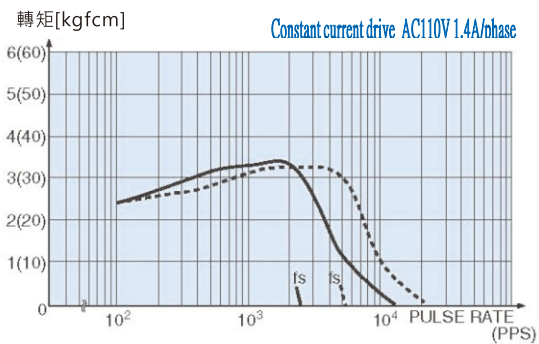
### MS566D-AM



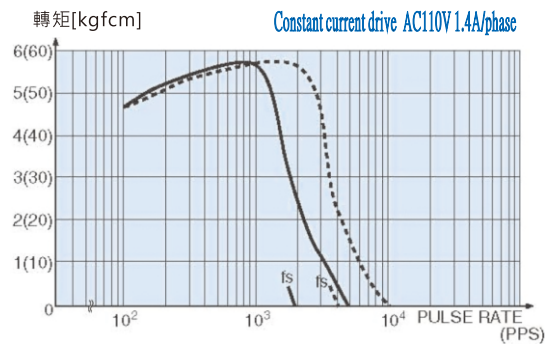
### MS569D-AM



### MS596-AM



### MS599-AM



# Dimamotor

An efficient drive comes from an efficient motor

## Dima Motor Tech. Co., Ltd.

Head office: 5F-11, No. 22, Wuquan 2nd Road, Xinzhuang Dist, New Taipei City

Tel: (02) 2290-1968

Fax: (02) 2290-1969

Web: [www.dimamotor.com.tw](http://www.dimamotor.com.tw)

E-mail: [dimamotor.sales@gmail.com](mailto:dimamotor.sales@gmail.com)