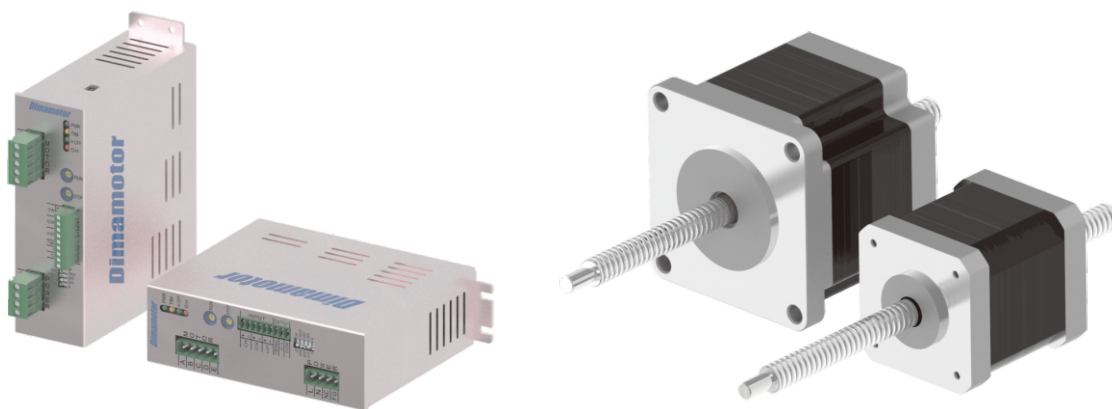


5Φ□42、□60 Linear stepper motor drive series



Motor name view : [MS545H -A - LN0805](#)

1 2

- 1 : [MS545H-A](#) : 5-phase 42-frame stepping motor, drive current 1.4A/phase
[MS545H-AO5L](#) : 5-phase 42-frame stepping motor, with encoder, driving current 1.4A/phase
[MS566D-A](#) : 5-phase 60-frame stepping motor, drive current 2.0A/phase
- 2 : [LN0805](#) : Through shaft type, screw diameter 8mm, screw lead: 5.0mm

Features:

- ⊙ Adopt 5-phase stepping motor to achieve high-speed, low-vibration action goals
- ⊙ Fully divisible with metric 5mm screw
- ⊙ Miniaturization and space saving
- ⊙ Lightweight, improving overall system responsiveness
- ⊙ Significantly reduces parts count and working time

Linear Stepping Motor Specifications:

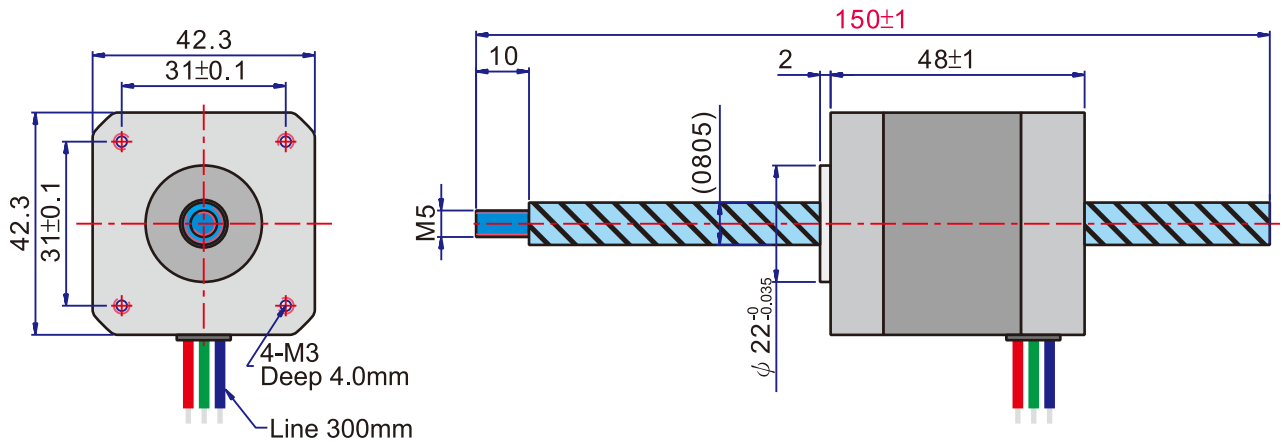
Motor type	A/phase	Screw Dia.	Lead	Max. Thrust Force	Weight
MS545H-A-LN0805	1.4A	8.0mm	5.0mm	100 N	400g
MS566D-A-LN0805	2.0A	8.0mm	5.0mm	300 N	750g

Stepper Motor Driver Specifications

Model	DS514F
Input power	1φ AC 110~220 V 50/60HZ
Ddrive current	0.4~1.4A/phase
Step Angle Split Setting	Full step/Half step (500/ 1000 divisions)
Signal input/output method	◇ Optocoupler input interface ◇ Open collector output interface
Input signal	◇ CW pulse input ◇ CCW pulse input ◇ Hold Off input
Output signal	◇ O.H output ◇ TIMING OUT output
Function	* Step angle switching function * self test function * Pulse input mode (1P/2P) switching function. * The current will automatically shut down when overheating * Automatic current drop (ACD) function
protection mechanism	* Signal terminal overvoltage protection * Driver overtemperature protection
Weight (g)	710

■ Dimensions (unit: mm)

MS545H-A-LN0805



MS566D-A-LN0805

